



# ***Rivet Busters & Chipping Hammers***

**Call Today to Order • 800-521-8104**

## 4181 Series Rivet Busters

The term "Rivet Buster" is very literal, as these tools were originally designed in the early 1900s for the installation and removal of hot rivets. In their standard configuration, they were used for the installation and shaping of hot rivets in structural steel. The addition of sleeves and a safety retainer to hold chisels allowed for the shearing off of rivet heads and the ability to punch out those same rivets. Advances in bolting technology and welding have all but eliminated the use of hot rivets in new construction.

The power of these hard-hitting tools led to them being repurposed as the most versatile series of handheld demolition tools known to man.

The Rivet Buster used with chisels is pound for pound the most powerful demolition tool used in the industry today.

Michigan Pneumatic Tool is the only company in the USA supplying this series of tools in five different sizes. Below you will see this exclusive family of tools and their specifications.

### MP-4181-4-USA-NEP

Our lightweight 4" tool is ideal for overhead work on concrete structures, parking garages, parking decks, concrete piers, tunnels and other close quarter work where you do not want the power of the hammer radiating through surrounding concrete causing additional fractures.

### MP-4181-USA-NEP

Our heavy-duty 11" tool is commonly used for the bigger jobs in various industrial applications such as bridge repair and maintenance, petrochemical plants and rental operations. This is the ideal tool to cut metal, shear rivets or the heads off of large bolts, split nuts and more. This tool is perfect for driving a chisel right through steel.

### MP-4181-6-USA-NEP

Our light to medium-duty 6" tool is ideal for cutting through concrete quickly, removing delaminated concrete, or rapidly exposing rebar to quickly evaluate a situation. This hammer is light enough for overhead applications where a chipping hammer is simply not powerful enough.

### MP-4181-14-USA-NEP

Our super-duty 14" tool is, hands down, the hardest-hitting self-repeating rivet buster on the market today. When you need to dismantle a heavy structure or piece of equipment, be that a bridge or huge piece of mining equipment, this tool has the unmatched power and speed to get the job done quickly.

### MP-4181-8-USA-NEP

Our medium-duty 8" tool is the staple for the industry. A standard for many rental companies, petrochemical plants, furnace brick and gunite contractors. It is popular with heavy equipment repair sites for removal of stubborn bolts, pins and shafts. This tool is hard-hitting with a slow and methodical blow that will dislodge even the toughest rusted fastener.



**Exclusive  
4" and 14"  
Rivet Busters!**



MP-4181-4-USA-NEP



MP-4181-14-USA-NEP



**Replacement Parts**

- 2101 Upper Sleeve
- 2103 Lower Sleeve
- 2104 Rubber Bumper
- 2104P Poly Bumper
- 2194 Lock Spring
- 2190-2.557 Retainer



MP-4181T-8-USA-NEP

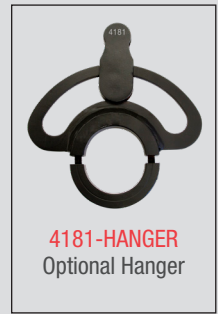
MP-4181T-USA-NEP



**T-Handle 0448051-C**  
Fits all MP-4181 tools.  
Primarily used on 8" and 11" tools.



**RBDH-4181-2435**  
Optional Dead Handle fits all 4181 Rivet Busters



**4181-HANGER**  
Optional Hanger

| Model              | Chisel Series | Stroke | Bore    | Blows Per Minute | Length  | Weight    | Air Inlet Thread | Rec'd Hose Size | Avg. Air Consump. |
|--------------------|---------------|--------|---------|------------------|---------|-----------|------------------|-----------------|-------------------|
| MP-4181-4-USA-NEP  | 2000          | 4"     | 1-3/16" | 1350             | 19"     | 27.4 lbs  | 1/2"             | 1/2"            | 24 cfm            |
| MP-4181-6-USA-NEP  | 2000          | 6"     | 1-3/16" | 1200             | 21"     | 29.5 lbs  | 1/2"             | 1/2"            | 30 cfm            |
| MP-4181-8-USA-NEP  | 2000          | 8"     | 1-3/16" | 1080             | 23"     | 31.25 lbs | 1/2"             | 1/2"            | 35 cfm            |
| MP-4181-USA-NEP    | 2000          | 11"    | 1-3/16" | 720              | 26"     | 34.5 lbs  | 1/2"             | 1/2"            | 37 cfm            |
| MP-4181-14-USA-NEP | 2000          | 14"    | 1-3/16" | 585              | 28-3/4" | 39.0 lbs  | 1/2"             | 1/2"            | 40 cfm            |
| MP-4181T-8-USA-NEP | 2000          | 8"     | 1-3/16" | 1080             | 32-1/4" | 37.5 lbs  | 1/2"             | 1/2"            | 32-35 cfm         |
| MP-4181T-USA-NEP   | 2000          | 11"    | 1-3/16" | 720              | 35-1/4" | 41.3 lbs  | 1/2"             | 1/2"            | 33-37 cfm         |

NEP - Non-Ejectable Piston

Call Today to Order • 800-521-8104

3-3

Rivet Busters - 4181 Series

## Rivet Busters



### MP-633-ORANGE-NEP

Ideal hammer for cleaning concrete truck mixing drums. Powerful enough to bust the remaining concrete out of the rotating drum, but not as likely to damage the drum due to operator error. Equipped with 2101, 2103, 2104, and 2194 accessories to accept 2000 series jumbo chisels.



**6"**

MP-633-ORANGE-NEP

### MP-633-ORANGE-NEP-1851

Ideal hammer for cleaning concrete truck mixing drums. Powerful enough to bust the remaining concrete out of the rotating drum, but not as likely to damage the drum due to operator error. Chisel retained by 1851 style retainer.



**6"**

MP-633-ORANGE-NEP-1851

### MP-133-ORANGE-NEP

The most popular tool used for demolition. Ideal for all general breaking, cutting and removal of concrete rivets and bolts. This workhorse of the rental industry delivers excellent return on investment.

Shown with Optional  
RBDH-133-2375  
Complete Dead Handle



**8"**

MP-133-ORANGE-NEP

### MP-1133-ORANGE-NEP

When tough meets tougher, you need the hard-hitting 11" stroke buster. Great for removal of large diameter rivets on bridges and the removal of boiler tubes from boiler plates. Smooth hammering allows the operator to control the blows per minute by feathering the throttle.



**11"**

MP-1133-ORANGE-NEP



133-HANGER  
Optional Hanger



| Model                  | Chisel Series | Stroke | Bore    | Blows Per Minute | Length  | Weight   | Air Inlet Thread | Rec'd Hose Size | Avg. Air Consumption |
|------------------------|---------------|--------|---------|------------------|---------|----------|------------------|-----------------|----------------------|
| MP-633-ORANGE-NEP      | 2000          | 6"     | 1-3/16" | 1100             | 20-1/2" | 27.5 lbs | 1/2"             | 1/2"            | 28 cfm               |
| MP-633-ORANGE-NEP-1851 | 2000          | 6"     | 1-3/16" | 1100             | 20-3/4" | 28.9 lbs | 1/2"             | 1/2"            | 28 cfm               |
| MP-133-ORANGE-NEP      | 2000          | 8"     | 1-3/16" | 1140             | 22"     | 32.5 lbs | 1/2"             | 1/2"            | 35 cfm               |
| MP-1133-ORANGE-NEP     | 2000          | 11"    | 1-3/16" | 850              | 25"     | 34.0 lbs | 1/2"             | 1/2"            | 42 cfm               |

NEP - Non-Ejectable Piston



MP-RB41-J-NEP



MP-RB90-J-NEP

## Rivet Busters

Lightweight yet powerful busters. Designed to get into tight areas underneath bridges, parking decks, concrete drums and confined spaces. Ideal for driving large nails in timber construction, cutting, removing rivets, busting concrete, refractory, boiler tube removal as well as installing rivets.

\*Equipped with jumbo series 2101, 2103, 2104, 2194 and 2190-2.400 accessories to accept 2000 series jumbo chisels.



### Replacement Parts

- MP-RB90-J-NEP (Only)
- 1502 Upper Sleeve
- 1504 Lower Sleeve
- 1505 Rubber Bumper
- 1505P Poly Bumper
- 194 Lock Spring
- 190-2.400 Retainer

| Model          | Chisel Series | Stroke | Bore    | Blows Per Minute | Length  | Weight   | Air Inlet Thread | Rec'd Hose Size | Avg. Air Consumption |
|----------------|---------------|--------|---------|------------------|---------|----------|------------------|-----------------|----------------------|
| MP-RB41-J-NEP* | 2000          | 4"     | 1-1/16" | 1650             | 18-1/4" | 22.6 lbs | 1/2"             | 1/2"            | 25 cfm               |
| MP-RB61-J-NEP* | 2000          | 6"     | 1-1/16" | 1300             | 20-1/4" | 25.0 lbs | 1/2"             | 1/2"            | 28 cfm               |
| MP-RB90-J-NEP  | 1500          | 9"     | 1-1/16" | 900              | 21"     | 28.0 lbs | 1/2"             | 1/2"            | 30 cfm               |
| MP-RB91-J-NEP* | 2000          | 9"     | 1-1/16" | 900              | 21"     | 28.0 lbs | 1/2"             | 1/2"            | 30 cfm               |

NEP - Non-Ejectable Piston

Call Today to Order • 800-521-8104

3-5

Rivet Busters



### MP-90R

#### Riveting Hammer

Heavy-duty riveter will drive hot rivets up to 1-1/8" diameter. Sizes designed for light and medium riveting work also available. Suited for general construction work and pipelines. Supplied with standard clip style rivet set retainer. Safety style retainer 160-2.445 available as an option. Can be converted to a rivet buster with retainer for using chisels, see page 3-11.

| Capacity          | Blows Per Minute | Bore    | Piston Stroke | Length   | Weight | Air Inlet Thread | Rec'd Hose Size | Avg. Air Consumption |
|-------------------|------------------|---------|---------------|----------|--------|------------------|-----------------|----------------------|
| 1-1/8" Hot Rivets | 1200             | 1-1/16" | 9-1/2"        | 20-9/16" | 23 lbs | 3/8"             | 1/2"            | 30 cfm               |



### MP-AA-OFFSET

#### Holder-On

Holder-Ons aid in driving rivets of larger sizes in cramped quarters. This tool not only aids in securing perfectly tight rivets, but also allows operator to work in comfortable positions, relieving fatigue from vibration with the normal dolly bar. Accepts DEL1500 series 1.217" shank rivet sets shown below.

| Type Rivet Set Shank | Diameter Piston | Distance - Center of Set to Side of Holder-On | Length Stroke | Collapsed Length | Extended Length | Weight | Air Inlet Thread | Rec'd Hose Size |
|----------------------|-----------------|---|---------------|------------------|-----------------|--------|------------------|-----------------|
| 1.217"               | 3-1/4"          | 1-1/8"  | 2-1/2"        | 6-7/8"           | 9-3/8"          | 14 lbs | 3/8"             | 1/2"            |

### Hot Riveting Hammer Accessories

For 1.217 Shank Riveting Hammers and Holder-Ons.

#### 160-2.445-KIT

##### Safety Retainer Kit

For use with DEL1500-S Safety Rivet Sets



160-2.445 Retainer  
(uses 1194-2 & 194 Lock Springs)



194 & 1194-2  
Lock Springs

##### Safety Retainer Clip



P001381

##### Nail Driver Set



DEL121712ND  
Nail Driver



6C-83  
Spring

For use with Ingersoll Rand 6CND, 8CND & 9CND Hammers only



#### Flush Rivet Sets Safety Clip or Safety Retainer

| Part No.  | Face Dia. (A) |
|-----------|---------------|
| DEL1541-S | 1"            |
| DEL1542-S | 1-1/4"        |
| DEL1543-S | 1-1/2"        |
| DEL1544-S | 1-3/4"        |
| DEL1545-S | 2"            |



#### Button Head Rivet Sets Uses Safety Retainer

| Part No.   | Rivet Shank Size | Cup Dia. (B) |
|------------|------------------|--------------|
| DEL1501-S  | 3/8"             | 19/32"       |
| DEL1502-S  | 7/16"            | 11/16"       |
| DEL1503-S  | 1/2"             | 25/32"       |
| DEL1504-S  | 9/16"            | 1-1/32"      |
| DEL1505-S  | 5/8"             | 1"           |
| DEL1506-S  | 11/16"           | 1-3/32"      |
| DEL1507-S  | 3/4"             | 1-3/16"      |
| DEL1508-S  | 13/16"           | 1-9/32"      |
| DEL1509-S  | 7/8"             | 1-3/8"       |
| DEL15010-S | 15/16"           | 1-15/32"     |
| DEL15011-S | 1"               | 1-19/32"     |

#### Button Head Rivets Set Uses Safety Clip only

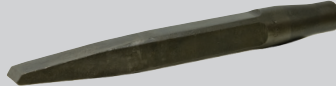
| Part No. | Rivet Shank Size | Cup Dia. (B) |
|----------|------------------|--------------|
| DEL15012 | 1-1/16"          | 1-11/16"     |
| DEL15013 | 1-1/8"           | 1-3/4"       |
| DEL15015 | 1-1/4"           | 2"           |
| DEL15019 | 1-1/2"           | 2-1/4"       |

Riveting Hammer & Accessories



## Rivet Buster - Chisel, Points Steel

MPT only supplies the highest quality rivet buster steel. Our subcontractors follow best practices in the industry today. Manufactured from alloy steel for the toughest of hammering applications.

| Type                          |   | Length                 | 1500 Series Heavy-Duty                   | 2000 Series Jumbo Extra Heavy-Duty                          |
|-------------------------------|---|------------------------|--|---|
| Standard Chisel               |    | 9"<br>12"<br>18"       | 1506<br>1506-12<br>1506-18               | 2005<br>2005-12<br>2005-18<br>For longer lengths see pg 3-8 |
| Moil Point                    |    | 9"<br>12"<br>18"       | 1512<br>1512-12<br>1512-18               | 2011<br>2011-12<br>2011-18<br>For longer lengths see pg 3-8 |
| Side Cut Chisel               |    | 9"<br>12"<br>18"       | 1507<br>1507-12<br>1507-18               | 2006<br>2006-12<br>2006-18                                  |
| Ripper<br>3/8" Back Out Punch |    | 9"<br>9"               | 1511<br>1515                             | 2010<br>-   |
| 1/2" Back Out Punch           |    | 9"<br>9"<br>11"<br>13" | 1516<br>1524-4LC<br>1524-6LC<br>1524-8LC | 2019<br>-<br>-<br>-   |
| 5/8" Back Out Punch           |   | 9"<br>9"<br>11"<br>13" | 1508<br>1520-4LC<br>1520-6LC<br>1520-8LC | 2007<br>2024-4LC<br>2024-6LC<br>2024-8LC                    |
| 3/4" Back Out Punch           |  | 9"<br>9"<br>11"<br>13" | 1509<br>1521-4LC<br>1521-6LC<br>1521-8LC | 2008BP<br>2025-4LC<br>2025-6LC<br>2025-8LC                  |
| 7/8" Back Out Punch           |  | 9"<br>9"<br>11"<br>13" | 1510<br>1522-4LC<br>1522-6LC<br>1522-8LC | 2009<br>2026-4LC<br>2026-6LC<br>2026-8LC                    |
| 1" Back Out Punch             |  | 9"<br>9"<br>11"<br>13" | 1517<br>1525-4LC<br>1525-6LC<br>1525-8LC | 2020<br>2028-4LC<br>2028-6LC<br>2028-8LC                    |
| 1-1/8" Back Out Punch         |  | 9"<br>9"<br>11"<br>13" | -<br>-<br>-<br>-                         | 2021BP<br>2029-4LC<br>2029-6LC<br>2029-8LC                  |



Call Today to Order • 800-521-8104

## Rivet Buster Chisels

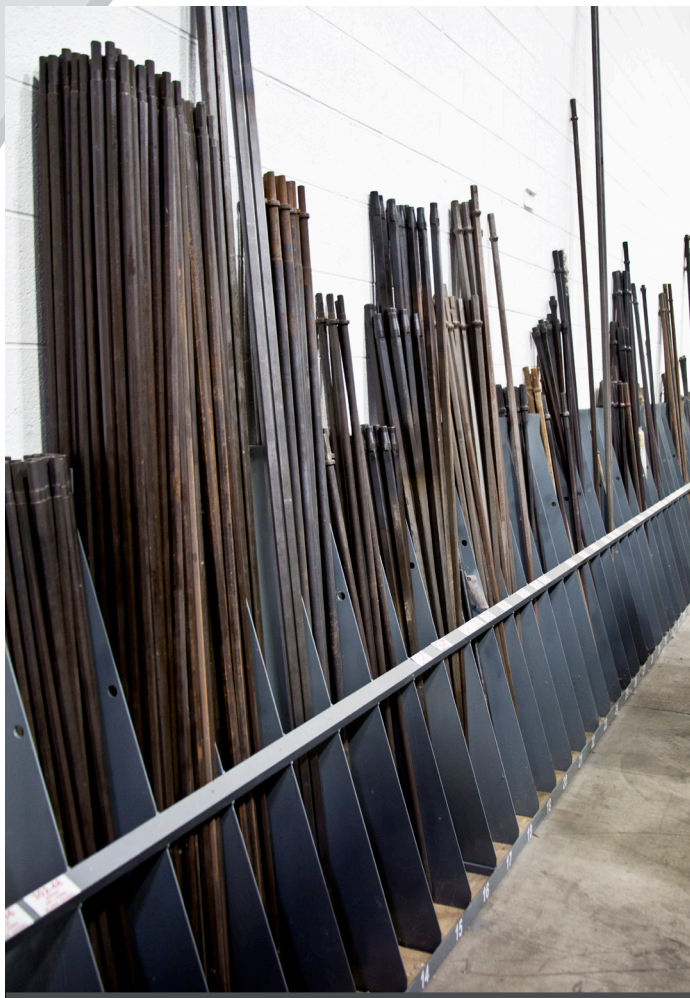
### Extra Long Length Chisels

#### Jumbo Flat Chisels

| Part No. | Length |
|----------|--------|
| 2005-36  | 36"    |
| 2005-48  | 48"    |
| 2005-60  | 60"    |
| 2005-72  | 72"    |
| 2005-84  | 84"    |
| 2005-96  | 96"    |
| 2005-108 | 108"   |
| 2005-120 | 120"   |

#### Jumbo Moil Points

| Part No. | Length |
|----------|--------|
| 2011-36  | 36"    |
| 2011-48  | 48"    |
| 2011-60  | 60"    |
| 2011-72  | 72"    |
| 2011-84  | 84"    |
| 2011-96  | 96"    |
| 2011-108 | 108"   |
| 2011-120 | 120"   |



### Rail Road Spike Driver

1-1/2" Shank Spike Driver - converts rivet buster to a RR Spike Driver

| Type  | Length | Model |
|---|--------|-------|
|  | 8"     | 115SD |
| No Sleeves Required   |        |       |

## Specials Rivet Buster Chisels

### 2000 Series Bushing Tool

2" x 2" Bushing Tool - used for roughing up concrete surfaces

| Type   | Length | Model |
|--|--------|-------|
|  | 10"    | 258   |
| 2103S Split Sleeve Required  |        |       |

### 2000 Series Asphalt Cutter

5" Wide Asphalt Cutter - ideal for cutting/trimming asphalt

| Type   | Length | Model   |
|--|--------|---------|
|  | 15"    | 257-VN3 |
| 2103S Split Sleeve Required  |        |         |

### 2000 Series Side Cut Chisel

Side Cut Chisel - used for cutting rivet heads, bolts and nuts

| Type   | Length | Model     |
|--|--------|-----------|
|  | 9"     | 276-AC    |
|  | 12"    | 276-12-AC |

### 2000 Series Non-Sparking Ripper Chisel

Non-Sparking Ripper - ideal for cutting petroleum tanks and oil tanks

| Type   | Length | Model |
|--|--------|-------|
|  | 9-1/2" | 295BC |

### 2000 Series Wide Chisel

2-1/2" Wide Chisel - used for stripping materials

| Type   | Length | Model |
|--|--------|-------|
|  | 15"    | 5602  |
| 2103S Split Sleeve Required  |        |       |

### 2000 Series Driving Tool

2-1/2" Diameter Face - can be used for testing or driving

| Type   | Length | Model  |
|--|--------|--------|
|  | 10"    | MPT-59 |
| 2103S Split Sleeve Required  |        |        |





## Rivet Buster Accessories -Jumbo 2000 Series

MPT manufactures and inventories the highest quality rivet buster accessories.



**2194**  
Lock Spring



**2104**  
Rubber Bumper



**2104P-RED**  
Red Poly Bumper



**2104P-ORANGE**  
Orange Poly Bumper



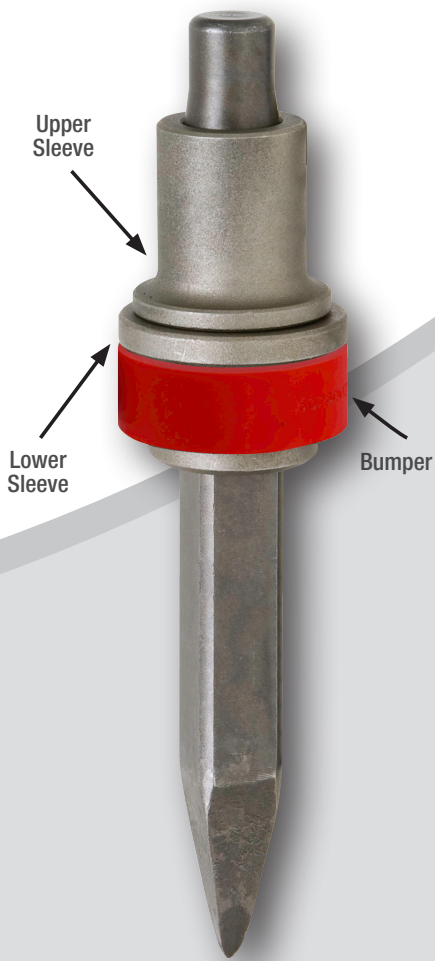
**2104P-BLACK**  
Black Poly Bumper



**2104P-BLUE**  
Blue Poly Bumper



**2101**  
Upper Sleeve



Chisel, Sleeves and  
Bumper Assembly



**2103**  
Lower Sleeve



**2101S**  
Upper Sleeve  
Short



**2103S**  
Lower Sleeve  
Split

Call Today to Order • 800-521-8104

3-9

## Rivet Buster Accessories -Jumbo 2000 Series

MPT manufactures all rivet buster retainers from the highest quality carbonized and heat-treated steel.

### 1851 Solid Retainer



| Tool Model No.                            | OEM Part |
|---|----------|
| Michigan Pneumatic MP-633-ORANGE-NEP-1851 | 1851     |
| Michigan Pneumatic 133 Series             | 1851     |
| Michigan Pneumatic 1133 Series            | 1851     |
| American Pneumatic 633 Series             | 5734     |
| American Pneumatic 133 Series             | 5734     |
| American Pneumatic 1133 Series            | 5734     |
| Sullivan Palatek SRB Series               | SI6085   |
| Texas Pneumatic TX-133 Series             | 1851     |

### 2190-2.400 Solid Retainer



| Tool Model No.                 | OEM Part   |
|--------------------------------|------------|
| Michigan Pneumatic RB41 Series | 2190-2.400 |
| Michigan Pneumatic RB61 Series | 2190-2.400 |
| Michigan Pneumatic RB91 Series | 2190-2.400 |
| Sullair MRB Series             | 250035-776 |
| Champion AT-RBA Series         | RBR6085    |
| Jet 2600 Series                | JCT2610-25 |
| Jet RB91 Series                | 552190     |
| Toku A91 Series                | T33219000  |

### 2190-2.557 Solid Retainer



| Tool Model No.                    | OEM Part   |
|-----------------------------------|------------|
| Michigan Pneumatic 4181 Series    | 2190-2.557 |
| Michigan Pneumatic 633-ORANGE-NEP | 2190-2.557 |
| Chicago Pneumatic 4181 Series     | P071849    |
| Chicago Pneumatic 4160 Series     | 9247985500 |

### 2190-2.565 Solid Retainer



| Tool Model No.              | OEM Part  |
|-----------------------------|-----------|
| Ingersoll-Rand 8001 Series  | 89938443  |
| Ingersoll-Rand 11001 Series | 89938443  |
| Toku RB91 HP, RB110 Series  | 410470360 |



## Rivet Buster Accessories -Jumbo 2000 Series

MPT manufactures all rivet buster retainers from the highest quality carbonized and heat-treated steel.

### 3303005340 Solid Retainer with Exhaust Ports



| Tool Model No.                | OEM Part   |
|-------------------------------|------------|
| Chicago Pneumatic 4608 Series | 3303005340 |
| Chicago Pneumatic 4611 Series | 3303005340 |

### 9001-200 Threaded Retainer



| Tool Model No.             | OEM Part |
|----------------------------|----------|
| Ingersoll-Rand 9001 Series | 9001-200 |

### 190-2.400 Solid Retainer



| Tool Model No.                 | OEM Part  |
|--------------------------------|-----------|
| Michigan Pneumatic RB90 Series | 190-2.400 |
| Jet RB90 Series                | 551190    |
| Toku A90 Series                | T32019000 |

### 190-2.445 2190-2.445 Solid Retainers



| Tool Model No.  | OEM Part   |
|---|------------|
| Chicago Pneumatic 40, 50, 60, 80, 90 Series (1500 Series) | 190-2.445  |
| Chicago Pneumatic 40, 50, 60, 80, 90 Series (2000 Series) | 2190-2.445 |

Call Today to Order • 800-521-8104

3-11



**MP-MOTOC-375**  
Outside Trigger D-Handle



**MP-MOTOC-375-ITD**  
Inside Trigger D-Handle



**MP-MOTOC-375T**  
T-Handle

## MOTOC Chipping Hammers

MOTOC is the most powerful, universal chipping demolition hammer ever designed! Engineered specifically to comply with various regulations for bridge renovation and other demolition work in both Canada and the USA (example: OPSS>PROV 928 Standards for Concrete Removal – Rehabilitation), it combines the best features for performance while maintaining strict tolerances and specifications to ensure compliance. The resulting tool is powerful and fast, ensuring faster material removal across a wide variety of jobs than the traditional chipping hammer designs. Lightweight, powerful and fast – try the MOTOC to safely shorten your work time and speed up your material removal rate. Uses 2000 Series Jumbo Chisels.

| Model            | Stroke | Bore    | Blows Per Minute | Length    | Weight   | Air Inlet Thread | Rec'd Hose Size | Avg. Air Consumption |
|------------------|--------|---------|------------------|-----------|----------|------------------|-----------------|----------------------|
| MP-MOTOC-375     | 4"     | 1-3/16" | 1500             | 17-15/16" | 18.5 lbs | 1/2"             | 1/2"            | 38 cfm               |
| MP-MOTOC-375-ITD | 4"     | 1-3/16" | 1500             | 17-3/16"  | 18.5 lbs | 1/2"             | 1/2"            | 38 cfm               |
| MP-MOTOC-375T    | 4"     | 1-3/16" | 1500             | 34-1/2"   | 30.0 lbs | 1/2"             | 1/2"            | 30-40 cfm            |



Chipping Hammers - MOTOC



MP-K2LR-D



MP-K2LR-RET

### Mini Chipping Hammers Outside Trigger D-Handle & Gooseneck Handle

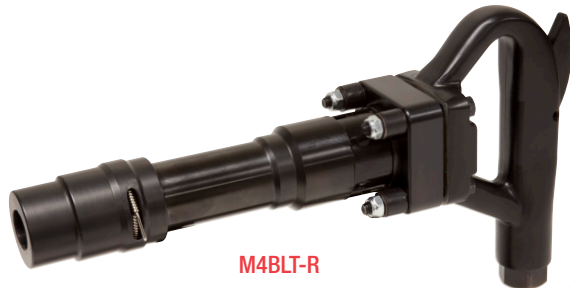
The smallest handle chipping hammer on the market. Butterfly valve ensures instant start-up when lever is depressed. Please specify 0.580 hex or 0.680 round shank.

| Model                      | Stroke | Bore | Blows Per Minute | Length | Weight  | Air Inlet Thread | Rec'd Hose Size | Avg. Air Consumption |
|----------------------------|--------|------|------------------|--------|---------|------------------|-----------------|----------------------|
| MP-K2LH-D<br>MP-K2LR-D     | 1-3/4" | 7/8" | 3600             | 12"    | 9.3 lbs | 3/8"             | 1/2"            | 16 cfm               |
| MP-K2LH-RET<br>MP-K2LR-RET | 1-3/4" | 7/8" | 3600             | 12"    | 8.0 lbs | 3/8"             | 1/2"            | 16 cfm               |



#### Replacement Parts

- 1190-1.655 Retainer
- 1194-2 Retainer Spring
- 1291-1.655 QC Retainer



M4BLT-R



M4BLT-R-ITD

### Mini 4-Bolt Chipping Hammers Inside & Outside Trigger D-Handle

Tool designed to reduce handle breakage to a new level for foundries using a 4-bolt hammer design. Both inside and outside levers are available to suit the application needs. The unique two-step piston provides a large mass piston in a smaller, narrower tool. The MPT Mini 4-Bolt hits harder than any other mini chipping hammer on the market today. Please specify 0.580 hex or 0.680 round shank.



5124B0DH  
Optional Dead Handle

| Models                     | Stroke | Bore | Blows Per Minute | Length  | Weight   | Air Inlet Thread | Rec'd Hose Size | Avg. Air Consumption |
|----------------------------|--------|------|------------------|---------|----------|------------------|-----------------|----------------------|
| M4BLT-H<br>M4BLT-R         | 2.6"   | 1.1" | 2750             | 14-1/4" | 10.5 lbs | 3/8"             | 1/2"            | 20 cfm               |
| M4BLT-H-ITD<br>M4BLT-R-ITD | 2.6"   | 1.1" | 2750             | 13-1/4" | 11.0 lbs | 3/8"             | 1/2"            | 20 cfm               |



#### Replacement Parts

- 1190-1.655 Retainer
- 1194-2 Retainer Spring
- 1291-1.655 QC Retainer

Call Today to Order • 800-521-8104

3-13



MP-CH3R

### 4-Bolt Chipping Hammers Outside Trigger D-Handle

The 4-bolt design helps eliminate handle breakage and allows for easy field service. Standard equipment includes chisel retainer and chisel retainer spring. Please specify 0.580 hex or 0.680 round shank.



CH4B-HANGER  
Optional Hanger

| Model              | Stroke | Bore   | Blows Per Minute | Length  | Weight   | Air Inlet Thread | Rec'd Hose Size | Avg. Air Consumption |
|--------------------|--------|--------|------------------|---------|----------|------------------|-----------------|----------------------|
| MP-CH2H<br>MP-CH2R | 2"     | 1-1/8" | 2300             | 14"     | 17.0 lbs | 1/2"             | 1/2"            | 28 cfm               |
| MP-CH3H<br>MP-CH3R | 3"     | 1-1/8" | 2100             | 15-1/4" | 18.5 lbs | 1/2"             | 1/2"            | 32 cfm               |
| MP-CH4H<br>MP-CH4R | 4"     | 1-1/8" | 1700             | 16-1/2" | 19.5 lbs | 1/2"             | 1/2"            | 36 cfm               |



#### Replacement Parts

- 1190-MPT1 Retainer
- 1194-2 Retainer Spring
- 1291-MPT2 QC Retainer

### 4-Bolt Chipping Hammers Inside Trigger D-Handle

Inside trigger design for greater comfort and control. Features include plate valve, vibration spacers, rotating exhaust, and replaceable inlet bushings. 4-bolt design reduces handle breakage. Please specify 0.580 hex or 0.680 round shank.



MP-CH3R-ITD



CH4B-HANGER  
Optional Hanger

| Model                      | Stroke | Bore   | Blows Per Minute | Length  | Weight   | Air Inlet Thread | Rec'd Hose Size | Avg. Air Consumption |
|----------------------------|--------|--------|------------------|---------|----------|------------------|-----------------|----------------------|
| MP-CH2H-ITD<br>MP-CH2R-ITD | 2"     | 1-1/8" | 2300             | 14-5/8" | 17.2 lbs | 3/8"             | 1/2"            | 28 cfm               |
| MP-CH3H-ITD<br>MP-CH3R-ITD | 3"     | 1-1/8" | 1900             | 16-1/2" | 19.0 lbs | 3/8"             | 1/2"            | 32 cfm               |
| MP-CH4H-ITD<br>MP-CH4R-ITD | 4"     | 1-1/8" | 1700             | 17-1/2" | 19.4 lbs | 3/8"             | 1/2"            | 36 cfm               |



#### Replacement Parts

- 1190-MPT1 Retainer
- 1194-2 Retainer Spring
- 1291-MPT2 QC Retainer

4-Bolt Chipping Hammers



MP-CH3R-QCBOR



-ITD  
Inside Trigger

## 4-Bolt Chipping Hammers with Quick Change Bolt on Retainer

4-bolt handle design reduces handle breakage. Ideal for the rental industry. Plate valve passes debris more easily. Most parts interchangeable with MPT CH series chipping hammers. Now equipped with a Bolt on Quick Change Retainer to eliminate the need for lock springs. Please specify 0.580 hex or 0.680 round shank.



CH4B-HANGER  
Optional Hanger

| Model                                  | Stroke | Bore   | Blows Per Minute | Length  | Weight   | Air Inlet Thread | Rec'd Hose Size | Avg. Air Consumption |
|--|--------|--------|------------------|---------|----------|------------------|-----------------|----------------------|
| MP-CH2H-QCBOR<br>MP-CH2R-QCBOR         | 2"     | 1-1/8" | 2300             | 15-1/4" | 18.5 lbs | 1/2"             | 1/2"            | 28 cfm               |
| MP-CH2H-ITD-QCBOR<br>MP-CH2R-ITD-QCBOR | 2"     | 1-1/8" | 2300             | 15-7/8" | 17.2 lbs | 1/2"             | 1/2"            | 28 cfm               |
| MP-CH3H-QCBOR<br>MP-CH3R-QCBOR         | 3-3/4" | 1-1/8" | 2100             | 16-1/2" | 18.5 lbs | 1/2"             | 1/2"            | 32 cfm               |
| MP-CH3H-ITD-QCBOR<br>MP-CH3R-ITD-QCBOR | 3-3/4" | 1-1/8" | 2100             | 17-3/4" | 19 lbs   | 1/2"             | 1/2"            | 32 cfm               |





MP-3300H

### Chipping Hammers - Plate Valve

Designed for cleaning castings, bushing concrete, and cutting or chipping masonry materials of all types. Ideal for shipyards, foundries and contractors. Please specify 0.580 hex or 0.680 round shank.



SA7404-PM  
Mufflers on  
page 2-10

| Model                | Stroke | Bore   | Blows Per Minute | Length  | Weight   | Air Inlet Thread | Rec'd Hose Size | Avg. Air Consumption |
|----------------------|--------|--------|------------------|---------|----------|------------------|-----------------|----------------------|
| MP-1100H<br>MP-1100R | 1"     | 1-1/8" | 2100             | 12-1/2" | 14.5 lbs | 3/8"             | 1/2"            | 22 cfm               |
| MP-2200H<br>MP-2200R | 2"     | 1-1/8" | 1900             | 13-1/4" | 15.2 lbs | 3/8"             | 1/2"            | 22 cfm               |
| MP-3300H<br>MP-3300R | 3"     | 1-1/8" | 1700             | 15-1/4" | 16.0 lbs | 3/8"             | 1/2"            | 23 cfm               |
| MP-4400H<br>MP-4400R | 4"     | 1-1/8" | 1400             | 16-1/2" | 18.0 lbs | 3/8"             | 1/2"            | 24 cfm               |



### Replacement Parts

- 1190-MPT1 Retainer
- 1194-2 Retainer Spring
- 1291-MPT2 QC Retainer



MP-300CH-RET

### Chipping Hammers - Simplate

Powerful, lightweight tools available in four sizes for chipping, beading, cleaning castings, cutting, and roughening concrete and masonry. Designed for rugged use in any application. Please specify 0.580 hex or 0.680 round shank.

| Model                        | Stroke | Bore   | Blows Per Minute | Length  | Weight    | Air Inlet Thread | Rec'd Hose Size | Avg. Air Consumption |
|------------------------------|--------|--------|------------------|---------|-----------|------------------|-----------------|----------------------|
| MP-100CH-RET<br>MP-100CR-RET | 1"     | 1-1/8" | 2800             | 13-1/2" | 14.75 lbs | 3/8"             | 1/2"            | 22 cfm               |
| MP-200CH-RET<br>MP-200CR-RET | 2"     | 1-1/8" | 2400             | 15-1/2" | 15.75 lbs | 3/8"             | 1/2"            | 22 cfm               |
| MP-300CH-RET<br>MP-300CR-RET | 3"     | 1-1/8" | 1800             | 16-1/4" | 16.4 lbs  | 3/8"             | 1/2"            | 23 cfm               |
| MP-400CH-RET<br>MP-400CR-RET | 4"     | 1-1/8" | 1500             | 17-3/4" | 18.0 lbs  | 3/8"             | 1/2"            | 24 cfm               |



### Replacement Parts

- 1190-MPT1 Retainer
- 1194-2 Retainer Spring
- 1291-MPT2 QC Retainer





MP-3AH-IR

### Chipping Hammers - Plate Valve

Features outside trigger and gooseneck handle for improved versatility in construction and industrial applications. Ideal for light demolition work, bridge decking, preparing concrete surfaces, stripping and removing metal, and many other applications. Please specify 0.580 hex or 0.680 round shank.

| Model                  | Stroke | Bore   | Blows Per Minute | Length  | Weight   | Air Inlet Thread | Rec'd Hose Size | Avg. Air Consumption |
|------------------------|--------|--------|------------------|---------|----------|------------------|-----------------|----------------------|
| MP-2AH-IR<br>MP-2AR-IR | 2"     | 1-1/8" | 2300             | 16"     | 15.0 lbs | 3/8"             | 1/2"            | 18 cfm               |
| MP-3AH-IR<br>MP-3AR-IR | 3"     | 1-1/8" | 1725             | 17-1/2" | 16.5 lbs | 3/8"             | 1/2"            | 20 cfm               |
| MP-4AH-IR<br>MP-4AR-IR | 4"     | 1-1/8" | 1480             | 18-7/8" | 17.5 lbs | 3/8"             | 1/2"            | 22 cfm               |



### Replacement Parts

- 1190-IRC1 Retainer
- 1194-2 Retainer Spring
- 1291-IRC2 QC Retainer



### Chipping Hammers - Through Valve

Excellent for chipping, scaling, cleaning work on castings, billets, and paper box stripping. Smooth throttle characteristics, easy to hold and powerful for its size. Through valve design provides excellent controllability. Please specify 0.580 hex or 0.680 round shank.

| Model            | Stroke | Bore   | Blows Per Minute | Length  | Weight    | Air Inlet Thread | Rec'd Hose Size | Avg. Air Consumption |
|------------------|--------|--------|------------------|---------|-----------|------------------|-----------------|----------------------|
| C30C-H<br>C30C-R | 3"     | 1-1/8" | 2200             | 16-1/2" | 13.25 lbs | 3/8"             | 1/2"            | 26 cfm               |



### Replacement Parts

- 1190-IRC1 Retainer
- 1194-2 Retainer Spring
- 1291-IRC2 QC Retainer



### Chipping Hammers - 3" Ring Valve

Delivers fast, powerful blows and produces maximum energy with minimal tool weight for medium to extra heavy-duty chipping. Rugged design for all heavy-duty chipping applications. Please specify 0.580 hex or 0.680 round shank.

| Model              | Stroke | Bore   | Blows Per Minute | Length | Weight | Air Inlet Thread | Rec'd Hose Size | Avg. Air Consumption |
|--------------------|--------|--------|------------------|--------|--------|------------------|-----------------|----------------------|
| MP-3RVH<br>MP-3RVR | 3"     | 1-1/8" | 2200             | 18"    | 15 lbs | 3/8"             | 1/2"            | 31 cfm               |



### Replacement Parts

- 1190-MPT1 Retainer
- 1194-2 Retainer Spring
- 1291-MPT2 QC Retainer



MP-W4R

### Chipping Hammers - W-Style Threaded

When conventional tapered style retainer chippers fail prematurely, the acme thread style chipping hammers are put into service. The heavy-duty retainer mechanism has two sets of steel sleeves and a rubber bumper to disperse and absorb the blows of the chisel. W-style chippers use oval or round collar chisels. Please specify 0.580 hex or 0.680 round shank.

| Model            | Stroke | Bore   | Blows Per Minute | Length  | Weight   | Air Inlet | Rec'd Hose Size | Avg. Air Consumption |
|------------------|--------|--------|------------------|---------|----------|-----------|-----------------|----------------------|
| MP-W3H<br>MP-W3R | 3"     | 1-1/8" | 1725             | 18-1/4" | 16.6 lbs | 3/8"      | 1/2"            | 29 cfm               |
| MP-W3R-HC        | 3"     | 1-1/8" | 1725             | 18-1/4" | 16.6 lbs | 3/8"      | 1/2"            | 29 cfm               |
| MP-W4H<br>MP-W4R | 4"     | 1-1/8" | 1480             | 19-1/4" | 17.5 lbs | 3/8"      | 1/2"            | 29 cfm               |



### Chipping Hammer Threaded Retainer & Parts



HHW1-300  
Threaded Retainer



HHW1-213  
Lower Washer



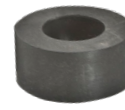
R00A2-103  
O-Ring



24SR-207  
Retainer Spring



H3R-31  
Upper Washer



H3R-203  
Rubber Bumper



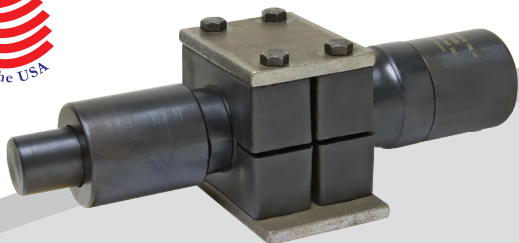
### MP-CH2HST-LR Core Knock-Out Tool

Designed to remove or rattle sand, shell cores or molds from castings. Equipped with anvil, retainer and mounting brackets. The brackets are designed to be welded into place. This unit does not extend. It does not incorporate a telescoping feature like other models on the market. It is fixed into one position.

| Stroke | Bore   | Blows Per Minute | Length  | Weight | Air Inlet Thread | Rec'd Hose Size | Avg. Air Consumption |
|--------|--------|------------------|---------|--------|------------------|-----------------|----------------------|
| 2"     | 1-1/8" | 2300             | 13-1/4" | 20 lbs | 1/2"             | 1/2"            | 28 cfm               |

#### Replacement Parts

- 1190-MPT1 Retainer
- 1194-2 Retainer Spring



### MP-3000C-U Core Knock-Out Tool

Designed to remove or rattle sand, shell cores or molds from castings. Equipped with anvil, retainer and mounting brackets. The brackets are designed to be welded into place. This unit does not extend. It does not incorporate a telescoping feature like other models on the market. It is fixed into one position.

| Stroke | Bore   | Blows Per Minute | Length | Weight    | Air Inlet Thread | Rec'd Hose Size | Avg. Air Consumption |
|--------|--------|------------------|--------|-----------|------------------|-----------------|----------------------|
| 3"     | 1-1/8" | 1700             | 14"    | 21.75 lbs | 3/8"             | 1/2"            | 22 cfm               |

#### Replacement Parts

- 300015 Retainer Sleeve
- 300014 Retainer Spring



### 4-Bolt Long Reach Chipping Hammers

Powerful tool for chipping, cleaning, removing paint, tile marble, roughening concrete and masonry. Designed for rugged use in any application. Please specify 0.580 hex or 0.680 round shank.



| Model                    | Stroke | Bore   | Blows Per Minute | Length  | Weight    | Air Inlet Thread | Rec'd Hose Size | Avg. Air Consumption |
|--------------------------|--------|--------|------------------|---------|-----------|------------------|-----------------|----------------------|
| MP-CH2H-LR<br>MP-CH2R-LR | 2"     | 1-1/8" | 2300             | 61-3/4" | 26.2 lbs  | 1/2"             | 1/2"            | 28 cfm               |
| MP-CH3H-LR<br>MP-CH3R-LR | 3"     | 1-1/8" | 2100             | 63"     | 27.25 lbs | 1/2"             | 1/2"            | 32 cfm               |
| MP-CH4H-LR<br>MP-CH4R-LR | 4"     | 1-1/8" | 1700             | 66-3/4" | 28.2 lbs  | 1/2"             | 1/2"            | 36 cfm               |

### Replacement Parts

- F03805** Round Shank 5" Wide Chisel
- G03805** Hex Shank 5" Wide Chisel
- 1190-MPT1** Retainer
- 1194-2** Retainer Spring
- 1291-MPT2** QC Retainer



### Long Reach Chipping Hammers

Hits twice as hard as a regular floor scaler. Ideal for tile, paint, glue, resin, barnacle and heavy scale removal. Please specify 0.580 hex or 0.680 round shank.



| Model                      | Stroke | Bore   | Blows Per Minute | Length | Weight    | Air Inlet Thread | Rec'd Hose Size | Avg. Air Consumption |
|----------------------------|--------|--------|------------------|--------|-----------|------------------|-----------------|----------------------|
| MP-2200H-LR<br>MP-2200R-LR | 2"     | 1-1/8" | 1900             | 54"    | 26.25 lbs | 1/2"             | 1/2"            | 22 cfm               |
| MP-3300H-LR<br>MP-3300R-LR | 3"     | 1-1/8" | 1700             | 55"    | 27 lbs    | 3/8"             | 1/2"            | 23 cfm               |

### Replacement Parts

- F03805** Round Shank 5" Wide Chisel
- G03805** Hex Shank 5" Wide Chisel
- 1190-MPT1** Retainer
- 1194-2** Retainer Spring
- 1291-MPT2** QC Retainer

## Chipping Hammer - Chisel Points Steel

MPT supplies chisels that are manufactured from the finest alloys available. Designed for use with retainer type chipping hammers. Each chisel is hardened and tempered throughout to provide maximum strength and resistance to fatigue, then carefully inspected to meet rigid industry quality standards.

Oval Collar  
0.680 Round ○



Oval Collar  
0.580 Hex ◻



Round Collar  
0.680 Round ○



Round Collar  
0.580 Hex ◻



### Blade Style

| Type                       | Image | Length | Oval Collar |           | Round Collar |           |
|----------------------------|-------|--------|-------------|-----------|--------------|-----------|
|                            |       |        | Round Shank | Hex Shank | Round Shank  | Hex Shank |
| Blank                      |       | 9"     | 301         | 302       | 401          | 402       |
|                            |       | 12"    | 301-12      | 302-12    | 403          | 404       |
|                            |       | 18"    | 301-18      | 302-18    | 403-18       | 404-18    |
|                            |       | 24"    | 301-24      | 302-24    | —            | —         |
|                            |       | 36"    | 301-36      | 302-36    | —            | —         |
|                            |       | 48"    | 301-48      | 302-48    | —            | —         |
| 1" Flat Chisel             |       | 9"     | 303         | 304       | 405          | 406       |
|                            |       | 12"    | 303-12      | 304-12    | 407          | 408FC     |
|                            |       | 18"    | 303-18      | 304-18    | 407-18       | 408-18    |
|                            |       | 24"    | 303-24      | 304-24    | 407-24       | 408-24    |
|                            |       | 36"    | 303-36      | 304-36    | 407-36       | 408-36    |
|                            |       | 48"    | 303-48      | 304-48    | 407-48       | 408-48    |
| Moil Point                 |       | 9"     | 313MP       | 314MP     | 409          | 410       |
|                            |       | 12"    | 315         | 316       | 411MP        | 412MP     |
|                            |       | 18"    | 315-18      | 316-18    | 411-18       | 412-18    |
|                            |       | 24"    | 315-24      | 316-24    | —            | —         |
|                            |       | 36"    | 315-36      | 316-36    | —            | —         |
|                            |       | 48"    | 315-48      | 316-48    | —            | —         |
| 2" Wide Scaling Chisel     |       | 9"     | 323WC       | 324       | 423          | 424       |
|                            |       | 12"    | 323-12      | 324-12    | 423-12       | 424-12    |
|                            |       | 18"    | 323-18      | 324-18    | 423-18       | 424-18    |
|                            |       | 24"    | 323-24      | 324-24    | 423-24       | 424-24    |
|                            |       | 36"    | 323-36      | 324-36    | 423-36       | 424-36    |
|                            |       | 48"    | 323-48      | 324-48    | 423-48       | 424-48    |
| 2-1/2" Non-Sparking Chisel |       | 9"     | 323-BC      | —         | —            | —         |
| 3" Wide Scaling Chisel     |       | 9"     | 323-3       | 324-3     | 423-3        | 424-3     |
|                            |       | 12"    | 323-12-3    | 324-12-3  | 423-12-3     | 424-12-3  |
| 5" Wide Scaling Chisel     |       | 9"     | F03805      | G03805    | F3805        | G3805     |
| Bushing Tool               |       | 9"     | 50100       | 50200BT   | 50300        | 50400     |
| 4-1/2" Clay Spade          |       | 15"    | F0980       | G0980     | F980         | G980      |

Longer lengths up to 144" are available. Round collar shank style chisels are also available. Please specify part number when ordering.

**3-20**

[www.MichiganPneumatic.com](http://www.MichiganPneumatic.com)



## Chipping Hammer Retainers

MPT manufactures chipping hammer retainers from the highest quality carbonized and heat-treated steel.

| Tool Model No.                               | OEM Part No. (Oval Collar) |
|--|----------------------------|
| Michigan Pneumatic CH Series (4 Bolt)        | 1190-MPT1                  |
| Michigan Pneumatic 100, 200, 300, 400 Series | 1190-MPT1                  |
| Michigan Pneumatic 1100 - 4400 Series        | 1190-MPT1                  |
| Michigan Pneumatic 3RV Series                | 1190-MPT1                  |
| Michigan Pneumatic 4123 Series               | 1190-MPT1                  |
| Jet JCO Series                               | 557911                     |
| Jet JCT 3600 Series                          | JCT3641-31                 |
| Champion Chisel AT-CH Series                 | CHR-1190SUL                |
| Chicago Pneumatic 9363                       | TP124870                   |
| Chicago Pneumatic 4130                       | P107243                    |
| Chicago Pneumatic 9373                       | 6152520210                 |
| Chicago Pneumatic 4125                       | P107243                    |
| Chicago Pneumatic 4123                       | P107243                    |
| Toku THA Series                              | T25119002                  |
| Toku TCH Series                              | T25119002                  |
| Sullair MCH Series                           | 68722235/<br>250012-525    |
| Sullivan SCH Series                          | SI6128                     |
| Tex CH Series                                | 1190-TPT1                  |

### 1190-MPT1 Oval Collar Solid Retainer



### 1190R-MPT1 Round Collar Solid Retainer



### 1291-MPT2 Deluxe Quick Change Retainer



Accepts both oval and round collar

### 1194-2 Universal Lock Spring Retainer Spring



Tools listed use 1190R-MPT1 and 1291-MPT2 when using round collar chisels.

| Tool Model No.                        | OEM Part No. (Oval Collar) |
|---------------------------------------|----------------------------|
| Michigan Pneumatic 2A, 3A, 4A Series  | 1190-IRC1                  |
| Michigan Pneumatic C30C Series        | 1190-IRC1                  |
| Ingersoll-Rand 2A1SA - 4A1SA Series   | HH1-1190                   |
| Ingersoll-Rand 2DA1SA - 4DA1SA Series | HH1-1190                   |
| Ingersoll-Rand 100 - 400 Series       | HH1-1190                   |

### 1190-IRC1 Oval Collar Solid Retainer



### 1190R-IRC1 Round Collar Solid Retainer



### 1291-IRC2 Deluxe Quick Change Retainer



Accepts both oval and round collar

### 1194-2 Universal Lock Spring Retainer Spring



Tools listed use 1190-IRC1 and 1291-IRC2 when using round collar chisels.



Call Today to Order • 800-521-8104

3-21

## Chipping Hammer Retainers

MPT manufactures chipping hammer retainers from the highest quality carbonized and heat-treated steel.

| Tool Model No.                    | OEM Part No. (Oval Collar) |
|-----------------------------------|----------------------------|
| Michigan Pneumatic 653 Series     | 1190-1.942                 |
| Michigan Pneumatic CH3(R/H)-QCBOR | 1190-1.942                 |
| American Pneumatic 260 Series     | 7022                       |
| American Pneumatic 650 Series     | 7022                       |
| American Pneumatic APT M43 Series | 7022                       |
| American Pneumatic APT M44 Series | 7022                       |

Tools listed use 1190R-1.942, 1291-1.942 or 18290 when using round collar chisels.

### 1190-1.942 Oval Collar Solid Retainer



### 1190R-1.942 Round Collar Solid Retainer



### 1291-1.942 Deluxe Quick Change Retainer



Accepts both oval and round collar

### 18290 Deluxe Quick Change Bolt On Retainer

No spring required



Accepts both oval and round collar

| Tool Model No.                  | OEM Part No. (Oval Collar) |
|---------------------------------|----------------------------|
| Michigan Pneumatic K2L Series   | 1190-1.655                 |
| Michigan Pneumatic K2LD Series  | 1190-1.655                 |
| Michigan Pneumatic M4BLT Series | 1190-1.655                 |
| Ingersoll-Rand K2L Series       | K2L-1190                   |
| Champion Chisel AT-CHMN Series  | CHR-1190MN                 |
| Toku AA-OS Series               | Y102298230                 |

Tools listed use 1190R-1.655 and 1291-1.655 when using round collar chisels.

### 1190-1.655 Oval Collar Solid Retainer



### 1190R-1.655 Round Collar Solid Retainer



### 1291-1.655 Deluxe Quick Change Retainer



Accepts both oval and round collar

### 1194-2 Universal Lock Spring Retainer Spring



### Chipping Hammer Chisel Collars



Oval Collar

Round Collar



## Chipping Hammer Retainers - Thread Type

MPT manufactures chipping hammer retainers from the highest quality carbonized and heat-treated steel.

### HHW1-300

#### Oval or Round Collar Threaded Retainer

| Tool Model No.               | OEM Part No. |
|------------------------------|--------------|
| Michigan Pneumatic W3 Series | HHW1-300     |
| Ingersoll-Rand W1-W4 Series  | HHW1-300     |



HHW1-300  
Threaded Retainer

### HHW1-A300

#### Threaded Retainer Complete and Wear Parts



HHW1-A300  
Complete



HHW1-300  
Threaded  
Retainer



HHW1-213  
Lower  
Washer



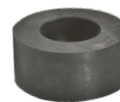
R00A2-103  
O-Ring



24SR-207  
Retainer  
Spring



H3R-31  
Upper  
Washer



H3R-203  
Rubber  
Bumper

### Hitch Cutter Retainer

Designed for both oval and round chisels. Requires a 1199 rubber bumper and 1194-2 retainer spring.



1195-MPT1



1199



1194-2

### Universal Lock Springs

#### 1194-2

Heavy-Duty Wire Lock Spring

#### 1194-5

Solid Urethane Lock Spring



1194-2



1194-5



## Don't Forget Your Essential Air Tool Gear!

- High-Wear & Consumable Parts
- Air Tool Oil & In-Line Lubricators
- Air Hoses & Whip Hose Assemblies
- Portable FRL's & Moisture Separators
- Safety Lock Cables & Clips



Air Movers  
(Page 17-5)



Portable FRL's  
(Page 17-4)



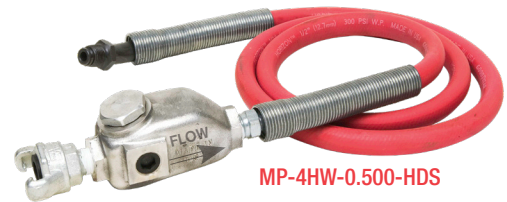
Portable Moisture Separator  
(Page 17-3)

**Accessories**  
Pages 18-5 - 18-14

## Whip Hoses

### 1/2" Lubricator Whip Hose Assemblies

| Model            | Assembly Components           |                |                  | Air Flow @ 70 PSI |
|------------------|-------------------------------|----------------|------------------|-------------------|
|                  | Fitting to Tool               | Hose           | Lubricator       |                   |
| MP-2HW-HDS       | 3/8" MPT                      | 1/2" ID x 6 ft | 0-R w/CP Fitting | 30 cfm            |
| MP-3HW-HDS       | 1/2" MPT                      |                |                  |                   |
| MP-4HW-HDS       | L-1-E swivel (7/8"-24 thread) |                |                  |                   |
| MP-4HW-0.500-HDS | L-3-E swivel (1/2" MPT)       |                |                  |                   |



MP-4HW-0.500-HDS

### 1/2" Black Hydraulic Whip Hose Assemblies (300 psi)

| Model       | Assembly Components     |                |                 |
|-------------|-------------------------|----------------|-----------------|
|             | Integral Swivel Fitting | Hose           | Lubricator      |
| 2HW-HYD-OLF | 3/8" MPT                | 1/2" ID x 6 ft | 0L-F CP Fitting |
| 3HW-HYD-OLF | 1/2" MPT                |                |                 |



2HW-HYD-OLF

### 1/2" Yellow Wire Braided Whip Hose Assemblies (500 psi)

| Model              | Assembly Components     |                |                   |
|--------------------|-------------------------|----------------|-------------------|
|                    | Swivel Fitting to Tool  | Hose           | Lubricator        |
| 2HW-Y500HDS-38-OLF | 3/8" MPT                | 1/2" ID x 6 ft | 0L-F w/CP Fitting |
| 3HW-Y500HDS-12-OLF | 1/2" MPT                |                |                   |
| L-3-OLF-Y500HDS    | L-3-E (1/2" MPT Swivel) |                |                   |



L-3-OLF-Y500HDS

## Industrial Grade Air Hoses - with Fittings

- Maximum pressures 200/250/300 psi
- Heavy-duty double strand
- High tensile rayon cord
- Tough neoprene
- Oil resistant



| Model | Hose ID | Hose OD | Length | Max. PSI | Fittings    |
|-------|---------|---------|--------|----------|-------------|
| AH-5  | 3/4"    | 1-5/32" | 50 ft  | 300 psi  | CP Fittings |

Other sizes also available. All air hoses are industrial grade construction.

## Safety Lock Cables

Helps prevent injury due to broken hose connections. Spring-powered loops provide a firm grip on the hose. Bleed air pressure from hose before removing safety lock cable.



SLC1

| Model | Cable Description (Dia x L) | Fits Hose OD   |
|-------|-----------------------------|----------------|
| SLC1  | 1/8" x 20"                  | 1/2" to 1-1/4" |
| SLC2  | 1/4" x 38"                  | 1-1/2" to 3"   |

## Air Tool Oil

A specially formulated high grade lubricating oil for all piston and rotary-type air tools. Lubricates and rustproofs for longer tool life.

- OIL-080 – 4 Ounce (12 per case)
- OIL-085 – 1 Quart (6 per case)
- OIL-014 – 1 Gallon (4 per case)

